



THE NAME IN
WOODWORKING
TOOLS
SINCE 1949



Welcome to



ANANT TOOLS PVT. LTD. was started as a small venture in late 1949 now has been completely modified to a family, burning their midnights oil to achieve heights to fulfil their goals.

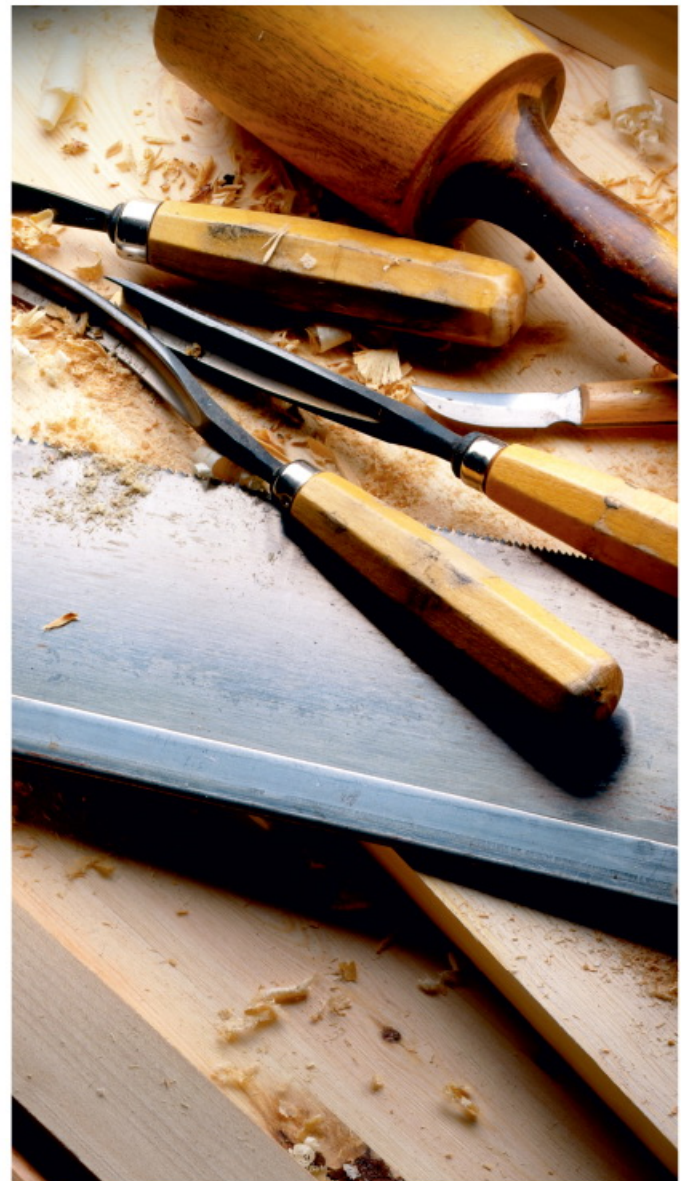
The company is engaged in manufacture of carpentry metal bodied bench planes of different models with over 75 years of unbeatable success and evergreen service to our customers, we have achieved a milestone today with umpteen orders coming from all over the world.

The work began under the name "**ANANT INDUSTRIES**" by late Sh. S.P. Chopra, a mechanical engineer by profession. It all began in a small rented building of 100 square yards at New Railway Road, Jalandhar. It was given the distinction of being the 'First Industrial Unit' to start the production of carpentry iron planes in the country, which at that time was usually imported from foreign countries. Later, the factory was shifted to the company's own premises of 1200 sq. yards in the industrial area in 1965.

With the passing years the company expanded considerably with the addition of one more premises of 10000 sq. yards, at A-1, Focal Point, Jalandhar. The company began to export its products to Europe, Russian Federation, USA, Middle East, Australia, Gulf and the African Countries. As of the year 2023 we continue to provide the best quality and price to our customers.

The Work has been expanded with the increase in production and with the addition of more items in our range of Carpenter's Planes. The Carpenter's T-Bar Clamps made of Mechanically Drawn T-Iron and S.G. Iron Jaws, Steel Sash Bar Clamps, Pipe/Gluing Clamp, Clamp Heads, G Clamps, Flooring Clamps, Sheet Metal Planes along with Masonry Tools like Brick Trowels, Plastering Trowels, Mason Cold Chisels, Plugging Chisels, Brick Bolster Chisels, Wrecking Bars are some instances of our wide range of tools that have exceeded over 50 tools as of now.

Mr. Swatantar Chopra, Son of S.P Chopra was earlier Managing the group, which now is being done by his son, Mr. Anuj Chopra. Mr. Anuj Chopra is now the Managing Director and Marketing Director with the association of Mrs. Aditi Chopra, wife of Mr. Anuj Chopra.





WOODWORKING TOOLS FROM



**MAXIMUM PERFORMANCE
AND PRECISION.**



AWARDS FOR ACHIEVEMENTS

OUR COMPANY HAS ALWAYS ACHIEVED A BUNCH OF APPRECIATIONS AND TROPHIES WITH ALL OUR TOOLS WELL KNOWN FOR THEIR QUALITY AND WORKMANSHIP.



GOLDEN AMERICA AWARD FOR QUALITY, NEW YORK, USA.



GOLDEN AWARD FOR COMMERCIAL PRESTIGE, MADRID, SPAIN



INTERNATIONAL AWARD FOR BEST TRADE, ROME, ITALY.



INTERNATIONAL EUROPE AWARD FOR QUALITY, NEW MILLENNIUM AWARD, PARIS, FRANCE



UDYOG RATTAN AWARD, PRESENTED BY INSTITUTE OF ECONOMIC STUDIES, INDIA





TABLE OF CONTENTS

ANANT IRON BODIED PLANES AND SPARES	1-11
ANANT HANDSAW	12
ANANT COMBINATION & SHARPENING STONE	12
ANANT CLAMPS	
ANANT T-BAR	13
ANANT PIPE CLAMP	14
ANANT STEEL SASH CLAMP	15
ANANT CLAMP HEAD	15
G CRAMPS	16
STEEL BODIED F-CLAMP	16
FLOORING CLAMP	17
ANANT PINCER	17
ANANT MASONRY TOOLS	
BRICK TROWEL	18
PLASTERING TROWEL	18
ANANT POWER TOOLS	
ANANT ROTRY HAMMER A220	19
ANANT ELECTRIC PLANNER A082	19
ANANT DRILL MACHINE (13MM)	19
ANANT MARBLE CUTTER A110B	20
ANANT MARBLE CUTTER A1104	20
ANANT ANGLE GRINDER A110	20
ANANT ANGLE GRINDER A801	20
ANANT CUTTING WHEEL AND SAW BLADES	
ANANT REINFORCED CUT OF WHEEL	20
ANANT ROCKSTAR DIAMOND SAW BLADE SEGMENTED	21
ANANT ROCKSTAR DIAMOND SAW BLADE CONTINUOUS RIM	21
ANANT WOODCRAFT TCT CIRCULAR SAW BLADE 110MM	21
ANANT WOODCRAFT TCT CIRCULAR SAW BLADE 125MM	21

IRON BODIED BENCH PLANES



DESCRIPTION

ANANT Planes are made in comprehensive range of patterns and sizes suitable for different purposes. They embody many notable improvements and are produced with great care and accuracy.

The cut irons in all ANANT Adjustable Planes are made of high Carbon Steel.

The cut iron is hardened and tempered under scientific control ensuring accuracy and uniformity. It is precision ground all over, and is tested and guaranteed to be right temper.

The body is ribbed to ensure strength and rigidity. The machined faces of the frog bed firmly on to similar machined faces on the body and are securely fastened in position by two frog screws which in effect makes the frog solid with the body and prevents chattering.

The parts for adjusting the cut iron are accurately made to give very fine adjustment.

The handle and knob are of selected hardwood/high quality plastic and are fastened to the body by steel studs with steel cap nuts.



PLANE NO.	TYPE	LENGTH		WIDTH OF CUT IRON		APPROX. WEIGHT		UNIT PACKING
		inches	mm	inches	mm	Pounds	Grams	
A3	Smooth	9½	235	1¼	45	3½	1300	12
A4	Smooth	9¾	250	2	50	4	1500	12
A4½	Smooth	10½	265	2¾	60	5½	1950	12
A5	Jack	14	355	2	50	5	1850	12
A5½	Jack	15½	380	2¾	60	6	2240	12
A6	Fore	18	455	2¾	60	7½	2800	6
A7	Jointer	22	560	2¾	60	8	3000	6
A8	Jointer	24	610	2¾	60	9	3350	6

MATERIALS

Body, Frog and Lever Cap : High grade cast iron.
 Cut Iron : High carbon steel.
 Cap Iron : Best quality steel.
 Handle and Knob : Selected hardwood/
 High quality Plastic

FINISH

Body and Frog : Stove inameled ANANT blue / Black.
 Base and sides of body ground and polished.
 Lever Cap : Plated.

PACKING

Individually Cartoned

PRIME SERIES

PLANE NO.	TYPE	LENGTH		WIDTH OF CUT IRON		APPROX. WEIGHT		UNIT PACKING
		inches	mm	inches	mm	Pounds	Grams	
AA3	Smooth	9½	235	1¼	45	3½	1300	12
AA4	Smooth	9¾	250	2	50	4	1500	12
AA4½	Smooth	10½	265	2¾	60	5½	1950	12
AA5	Jack	14	355	2	50	5	1850	12
AA5½	Jack	15½	380	2¾	60	6	2240	12
AA6	Fore	18	455	2¾	60	7½	2800	6
AA7	Jointer	22	560	2¾	60	8	3000	6
AA8	Jointer	24	610	2¾	60	9	3350	6



All Sizes are available
 with Corrugated Base Also

MULTI-PLANE NO. A45



DESCRIPTION

The ANANT Multi-Planes, as its name implies, will perform a wide range of planing operations required by the cabinet maker and joiner, consisting of:

1. PLOUGHING
2. DADOING
3. BEADING
4. CENTRE BEADING
5. RABBETING & FILLISTERING
6. MATCH PLANNING
7. SASH PLANNING
8. SLITTING

The many outstanding features of the ANANT multi-plane include: screw adjustment to cut iron, also to fence and depth gauge, two sets of fence arms (long and short), beading stop, slitting cutter, sliding section depth gauge, cam steady, and spurs for cross grain work. 23 Cut Irons are supplied with the planes as standard equipment. A comprehensive instruction booklet supplied with each plane.

PLANE NO.	LENGTH		UNIT PACKING
	inches	mm	
A45	10	250	3

MATERIALS

Body and sliding section: High grade cast iron.
Cut Iron : High carbon steel.
Fence: Cast iron with wood face, Handle and Knob selected hardwood/high quality plastic.

FINISH

Plated all over.

PACKING

Individually packed in a varnished wooden box.
Length 108" (277mm), Approx. weight 10 pounds (4.54 kg).

Spare cut irons and parts are readily available



PLOUGH PLANE NO. A52

DESCRIPTION

ANANT Plough Plane will plough nine sizes of grooves from 1/8 inch (3mm) to 5/8 inch (16mm) in width to a depth of 5/8 inch (16mm) at any distance from the edge of the edge of the work upto 5 inches (127mm). 9 Standard of plough cut irons supplied with each plane. Screw adjustment ensure accurate and easy control of the cut iron whilst the cut iron clamping screw prevents lateral movement of the cut iron. Each plane is fitted with an adjustable depth gauge, a double arm adjustable bridge fence and two pairs of fence arms (long and sort). the fence may be used as either side of plane.

PLANE NO.	LENGTH		UNIT PACKING
	inches	mm	
A52	7 3/8	200	10

MATERIALS

Body and sliding section : High grade cast iron.
Cut Iron : High carbon steels.

FINISH

Chrome Plated all Over.

PACKING

Individually cartoned
9 Standard cut irons are supplied with this plane.
1/8" 3/16" 1/4" 5/16" 3/8" 7/16" 1/2" 9/16" 5/8"

Spare cut irons and parts are readily available



CIRCULAR PLANE NO. A113



DESCRIPTION

The plane is designed for use of concave and convex surface. The flexible steel face is anchored at each end of the body of the plane and center screw adjustable enable the desired curvature of the sole to be set quickly and positively. The frame is shaped to provide a comfortable grip at each end and the cut iron is fully adjustable being secured when set by a lever cap.

PLANE NO.	LENGTH		UNIT PACKING
	inches	mm	
A113	10	45	12

MATERIALS

Body : High Grade Cast Iron.
Cut Iron : High Carbon Steels.
Face : High Quality Spring Steels

PACKING

Individually cartoned.

FINISH

Body : Stove enamelled ANANT blue.
Lever Cap : Plated



BULL NOSE RABBET PLANE NO. A77

DESCRIPTION

The plane is designed for the fine work where extreme accuracy is required. An improved adjustable mouth has been embodied in this plane, two steel distance pieces between the detachable nose and the body providing four different mouth adjustments for fine or coarse work.

The plane can be converted to a chisel plane by removing the nose.

The depth of cut is regulated by screw adjustment of the cut iron. The base and sides are accurately machined and bright finished and the plane may be used on the either side.

PLANE NO.	LENGTH		WIDTH OF CUT IRON		UNIT PACKING
	inches	mm	inches	mm	
A77	4	102	1 1/8	29	36

MATERIALS

Body, Nose and Lever Cap: High grade cast iron.
Cut Iron: High carbon steel.

PACKING

Individually cartoned

FINISH

Stove enamelled ANANT blue. Base and sides of body ground and polished.



DUPLEX RABBET & FILLISTER PLANE



DESCRIPTION

Similar in operation to the No. A78, this plane will also cut rabbets and fillisters up to 1½" (38 mm) in width. With the cut iron in the forward position, the plane may be used for bull nose work and when in the rear position, adjustment to the cut iron is provided by a lever.

Fitted with a hardened steel spur for cross grain work and an adjustment gauge which can be removed from the plane if desired. The single arm adjustable fence supplied may be used on either side of the plane. Base and sides are ground and polished.

PLANE NO.	LENGTH		WIDTH OF CUT IRON		UNIT PACKING
	inches	mm	inches	mm	
A078	8½	216	1½	38	12

PRIME SERIES

AA078	8½	216	1½	38	12
-------	----	-----	----	----	----

MATERIALS

Body and fence : High grade cast iron.
Cut Iron: High carbon steel.

PACKING

Individually packed

FINISH

Stove enamelled ANANT black.
Base and sides of body ground and polished.



DUPLEX RABBET & FILLISTER PLANE NO. A78

DESCRIPTION

The plane is designed to cut accurate rabbets and fillisters up to 1/2" (38 mm) in width. Two cut iron positions are provided, the forward position for bullnose work and the rear position for normal rabbeting and fillistering. When used in the rear position, the cut iron is screw adjusted and is fed into the work with an accurate, positive and easy control. A hardened steel spur is fitted to assist in rabbeting across the grain and the fully adjustable depth gauge is removable. The adjustable fence supplied may be used on either side of the plane and two fence arms simplify accurate setting and control. The base and sides are ground and polished.

PLANE NO.	LENGTH		WIDTH OF CUT IRON		UNIT PACKING
	inches	mm	inches	mm	
A78	8½	216	1½	38	12

PRIME SERIES

AA78	8½	216	1½	38	12
------	----	-----	----	----	----

MATERIALS

Body and fence : High grade cast iron.
Cut Iron : High carbon steel.
Knob : Selected hardwood/ high quality plastic

PACKING

Individually packed

FINISH

Stove enamelled ANANT blue. Base iron.
and sides of body ground and polished.



BENCH RABBET PLANE NO. A10



DESCRIPTION

These planes are recommended for general rabbeting work where a heavy section is being cut. The planes are fitted with normal adjustments to the cut irons.

PLANE NO.	LENGTH		WIDTH OF CUT IRON		UNIT PACKING
	inches	mm	inches	mm	
A10	13	330	2	43	12

PRIME SERIES

AA10	13	330	2	43	12
------	----	-----	---	----	----



MATERIALS

Body, Frog : High grade cast iron.

Cut Iron : High carbon steel.

Handle and knob : Selected hardwood/High quality plastic.

FINISH

Body and frog: Stove enamelled **ANANT** blue.

Base and sides of body ground and polished.

Lever cap and screw: Plated

PACKING

Individually packed

CRAFTSMAN PLANE NO. A33

DESCRIPTION

The plane is adjustable instantaneously by means of two knurled screws for depth of cut and cut iron alignment.

PLANE NO.	LENGTH		WIDTH OF CUT IRON		UNIT PACKING
	inches	mm	inches	mm	
A33	8 $\frac{1}{4}$	210	1 $\frac{1}{4}$	45	15

PRIME SERIES

AA33	8 $\frac{1}{4}$	210	1 $\frac{1}{4}$	45	15
------	-----------------	-----	-----------------	----	----



MATERIALS

Body and lever cap: High grade cast iron.

Cut Iron: High carbon steel.

FINISH

Stove enamelled **ANANT** blue. Base and sides of body ground and polished.

PACKING

Individually packed

RABBET PLANE NO. A39

DESCRIPTION

The plane has an angular cut iron seat for a secure and smooth cut is provided with screw adjustable depth gauge

PLANE NO.	LENGTH		WIDTH OF CUT IRON		UNIT PACKING
	inches	mm	inches	mm	
A39	8	200	$\frac{1}{2}$	12	36

MATERIALS

Body : High grade cast iron.

Cut Iron: High carbon steel.

FINISH

Stove enamelled **ANANT** blue.

PACKING

Individually cartoned.



BLOCK PLANE NO. A102



A light block plane suitable for straight forward work where frequent adjustment is not essential.

DESCRIPTION

The ANANT Block Plane is a handy, easy to use tool, mainly used when planing and grain, its use extending to many other small planing jobs.

PLANE NO.	LENGTH		WIDTH OF CUT IRON		UNIT PACKING
	inches	mm	inches	mm	
A102	5½	140	1 3/8	35	60

PRIME SERIES

AA102	5½	140	1 3/8	35	60
-------	----	-----	-------	----	----

MATERIALS

Body and Lever Cap: High grade cast iron.
Cut Iron: High carbon steel

FINISH

Stove enamelled ANANT blue.
Base and sides of body ground and polished

PACKING

Individually cartoned.



BLOCK PLANE NO. A110

A general purpose block plane the cut iron of which is rigidly held by a knurled wheel and screw. A hardwood/plastic front knob is fitted.

DESCRIPTION

The ANANT block plane is handy, easy to use tool, mainly used when planing and grain, its use extending to many other planing jobs.

PLANE NO.	LENGTH		WIDTH OF CUT IRON		UNIT PACKING
	inches	mm	inches	mm	
A110	7	178	1 5/8	42	48

PRIME SERIES

AA110	7	178	1 5/8	42	48
-------	---	-----	-------	----	----

MATERIALS

Body and lever cap: High grade cast iron.
Cut Iron: High carbon steel.

FINISH

Stove enamelled ANANT blue. Base and sides of body ground and polished.

PACKING

Individually cartoned.



BLOCK PLANE NO. A130

DESCRIPTION

This plane has two mouths, the illustration showing the cut iron in its normal position. Both the cut iron and lever cap may be reversed to form bull nose plane. Cut iron is tightened in position by a knurled wheel and screw

PLANE NO.	LENGTH		WIDTH OF CUT IRON		UNIT PACKING
	inches	mm	inches	mm	
A130	7 3/8	197	1 5/8	40	30

PRIME SERIES

AA130	7 3/8	197	1 5/8	40	30
-------	-------	-----	-------	----	----

MATERIALS

Body and Lever Cap : High grade cast iron.
Cut Iron: High carbon steel.

FINISH

Stove enamelled ANANT blue. Base and sides of body ground and polished.

PACKING

Individually cartoned.



BLOCK PLANE NO. A9½



DESCRIPTION

The plane is fully adjustable and capable of fine accurate work. The screw adjusted cut iron is held firmly in position by a lever and cam and the mouth is adjustable for fine or coarse work.

PLANE NO.	LENGTH		WIDTH OF CUT IRON		UNIT PACKING
	inches	mm	inches	mm	
A9½	6	153	1 5/8	40	36

PRIME SERIES

AA9½	6	153	1 5/8	40	36
------	---	-----	-------	----	----

MATERIALS

Body and Lever Cap : High grade cast iron.
Cut Iron: High carbon steel.

FINISH

Stove enamelled ANANT blue.
Base and sides of body ground and polished.

PACKING

Individually cartoned.



BLOCK PLANE NO. A60½

DESCRIPTION

The ANANT block planes are made from accurately machined, fine grey iron. Unmachined surfaces are finished with a durable high gloss stoving enamel. Block planes are ideal for end grain work or any situation where single handed applications are required. The low angle fully supported cutter ensures that vibration is kept to a minimum, thus making for good performance on plastic laminates and other man-made materials. Low angle cutters seats at 13½ degrees. Fully adjustable for depth of cut, cutter alignment and size of mouth. Particularly effective on end grain and plastic laminates.

PLANE NO.	LENGTH		WIDTH OF CUT IRON		UNIT PACKING
	inches	mm	inches	mm	
A60½	6	150	1 3/8	35	36

PRIME SERIES

A60½	6	150	1 3/8	35	36
------	---	-----	-------	----	----

MATERIALS

Body and Lever Cap: High grade cast grey iron.
Cut Iron: High grade carbon steel.

FINISH

Stove enamelled ANANT black.
Base and sides of body ground and polished.

PACKING

Individually packed in carton box.



BLOCK PLANE NO. A60

DESCRIPTION

The ANANT block planes are made from accurately machined, fine grey iron. Unmachined surfaces are finished with a durable high gloss stoving enamel. Block planes are ideal for end grain work or any situation where single handed applications are required. The low angle fully supported cutter ensures that vibration is kept to a minimum, thus making for good performance on plastic laminates and other man-made materials. Fully adjustable for depth of cut iron and cutter alignment. Cutter seats at 21 degrees. Ideal for end grain and general purpose fine finishing.

PLANE NO.	LENGTH		WIDTH OF CUT IRON		UNIT PACKING
	inches	mm	inches	mm	
A60	7	180	1 5/8	40	30

MATERIALS

Body and Lever Cap : High grade cast grey iron.
Cut Iron: High grade carbon steel.

FINISH

Stove enamelled ANANT black.
Base and sides of body ground and polished

PACKING

Individually packed in carton box



BLOCK PLANE NO. A220



DESCRIPTION

The ANANT block planes are made from accurately machined, fine grey iron. Unmachined surfaces are finished with a durable high gloss stoving enamel. Block planes are ideal for end grain work or any situation where single handed applications are required. The low angle fully supported cutter ensures that vibration is kept to a minimum, thus making for good performance on plastic laminates and other man-made materials.

Fully adjustable for depth of cut iron and cutter alignment. Cutter seats at 21 degrees. Ideal for end grain and general purpose fine finishing. A general purpose adjustable block plane.

PLANE NO.	LENGTH		WIDTH OF CUT IRON		UNIT PACKING
	inches	mm	inches	mm	
A220	6 ¼	160	1 5/8	40	36

PRIME SERIES

AA220	6 ¼	160	1 5/8	40	36
-------	-----	-----	-------	----	----

MATERIALS

Body and Lever Cap: High grade cast grey iron.
Cut Iron: High grade carbon steel.

FINISH

Stove enamelled ANANT black.
Base and sides of body ground and polished.

PACKING

Individually packed in carton box.



BLOCK PLANE NO. A202

DESCRIPTION

This ANANT block planes is designed for fine planing of wood of various species, as well as planing of workpieces or the ends of parts in assembled products (frames, boxes etc.). the cutter is made up of high quality steel and is hardened to HRC 53-62, which provides a long lastings service of a plane.

PLANE NO.	LENGTH		WIDTH OF CUT IRON		UNIT PACKING
	inches	mm	inches	mm	
A202	5 3/8	145	1 1/8	30	40

MATERIALS

Body and Lever Cap: High grade cast grey iron.
Cut Iron: High grade carbon steel.

FINISH

Stove enamelled ANANT black.
Base and sides of body ground and polish.

PACKING

Individually packed in carton box.



PLANE NO. A203

DESCRIPTION

This ANANT plane is an ideal tool for any stage of wood processing. It is made of high quality material in compliance with standard specification. It is used for primary rough planing of sawn wood surfaces.

PLANE NO.	LENGTH		WIDTH OF CUT IRON		UNIT PACKING
	inches	mm	inches	mm	
A203	10	250	2	50	12

MATERIALS

Body and Lever : High grade cast grey iron.
Cut Iron: High grade carbon steel.

FINISH

Stove enamelled ANANT black.
Base and sides of body ground and polished

PACKING

Individually packed in carton box



SPOKESHAVES



DESCRIPTION

The Spokeshave is a handy shaping tool useful for small curves, furniture legs, etc; and provides a smooth plane-like finish. The wide range of spokeshaves caters for every requirement and is produced in two different types, (a) with flat face for use on convex curves, and (b) with round face for use on concave curves. The choice of raised and flat handles is a matter of personal preferences. All are fitted with double iron and the combined cop iron and lever cap being secured either by means of thumb screw or knurled screw according to type.



MATERIALS

Body : Nos. A151, A151R, A51, A51R, A63, A64, High grade malleable iron.. Guaranteed against breakage.
Nos. 0151, 0151R, 051 and 051R High grade cast iron.
Cut Iron: High Carbon Steel

FINISH

Stove enamelled, Malleable iron red,
Cast iron ANANT Blue.

PACKING

Individually cartoned. 051, 051R, 0151, 0151R, A51, A51R, A151, A151R four per master carton and A63 six per master carton.



PRIME SERIES

PLANE NO.	LENGTH		WIDTH OF CUT IRON		UNIT PACKING	PLANE NO.
	inches	mm	inches	mm		
051	10	250	2 1/8	54	72	0051
051R	10	250	2 1/8	54	72	0051R
0151	10	250	2 1/8	54	72	00151
0151R	10	250	2 1/8	54	72	00151R
A51	10	250	2 1/8	54	72	AA51
A51R	10	250	2 1/8	54	72	AA51R
A151	10	250	2 1/8	54	72	AA151
A151R	10	250	2 1/8	54	72	AA151R
A64	9	210	1 3/4	45	144	AA64
A63	9	210	1 3/4	45	144	AA63

No. 0151 Flat Face, No. 0151R Round Face

Raised Handle, Cast Iron Body.

No. A151 Flat Face, No. A151R Round Face

Raised Handle, Malleable Iron Body.

No. A63 Round Face

Straight Handle, Malleable Iron Body

No. 0151 Flat Face, No. 0151R Round Face

Adjustable cut iron, Raised Handle Cast Iron Body.

No. A151 Flat Face, No. A151R Round Face

Adjustable cut iron, Raised Handle Malleable Iron Body.

No. A64 Flat Face

Straight Handle, Malleable Iron Body

SPARE CUT IRONS

DESCRIPTION

The Cut Iron is of High Carbon Steel and is hardened and tempered under scientific control, which ensured accuracy and uniformity. It is precision ground all over, is tested and guaranteed to be the right temper

LENGTH	inches	1 1/2"	1 3/4"	2"	2 1/4"	2 3/8"	2 5/8"
	mm	30	45	50	57	60	66

PACKING

6 Pieces in a box.



ANANT SHEET PLANE NO. 33A



DESCRIPTION

Joinery Maner 33A Metal is used for finishing manual planing of wood of various species, as well as for planing the ends of blanks or ords of parts in assembled products (fromes, boxes etc.)

BODY DESCRIPTION :

Cutter Width : 45MM
Planner Length : 250MM

BLADE MATERIAL :

High Carbon Steel.

PLANE NO. :

33A



ANANT SHEET PLANE NO. 33B

DESCRIPTION

No. 33B Steel Planer with adjustable blade made on high-precision equipment provides high quality finishing of the surface features. The blade of the planer is made of high quality tool steel hardened and tempered to HRC 55-63.

BODY DESCRIPTION :

Cutter Width : 45MM
Planner Length : 250MM

BLADE MATERIAL :

High Quality Tool Steel.

PLANE NO. :

33B



ANANT SHEET PLANE NO. 102

DESCRIPTION

This professional tool is used for finishing manual planing of wood of various species, as well as for planing the ends of blanks or ends of parts in assembled products (frames, boxes etc)

BODY DESCRIPTION :

Cutter Width : 35MM
Planner Length : 135x40mm

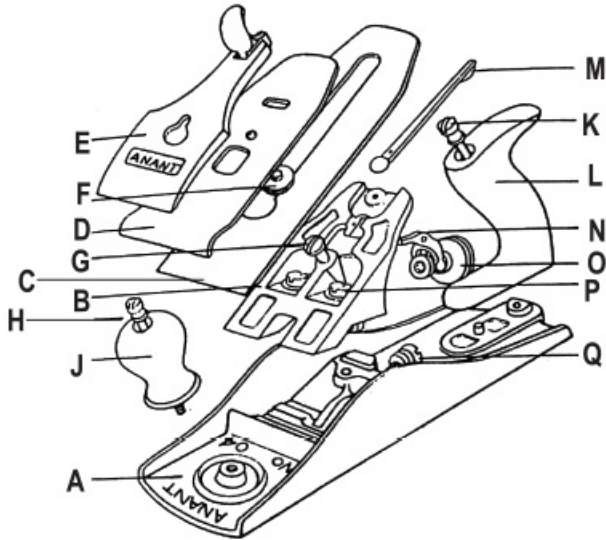
BLADE MATERIAL :

High Quality Steel.

PLANE NO. :

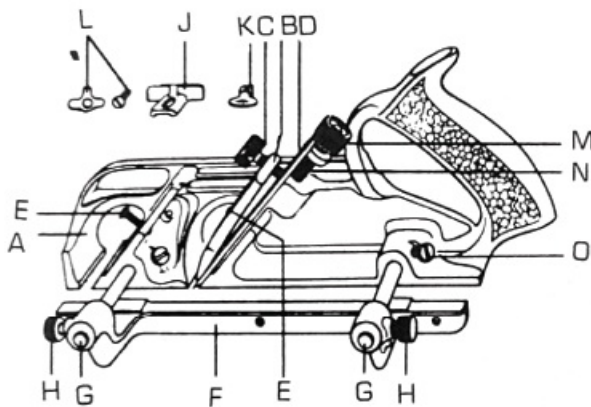
102





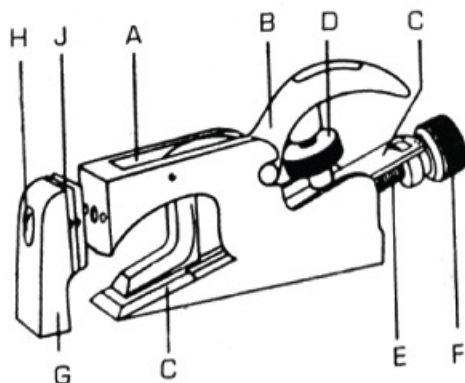
No. A3- A8 ADJUSTABLE IRON PLANES

- | | | | |
|---|--------------------|---|-------------------------|
| A | Body | J | Knob |
| B | Frog | K | Handle Nut and Screw |
| C | Cutting Iron | L | Handle |
| D | Cap Iron | M | Lateral Adjusting Lever |
| E | Lever Cap | N | "Y" Adjusting Lever |
| F | Cap Iron Screw | O | Cutter Adjusting Nut |
| G | Lever Cap Screw | P | Frog Screws |
| H | Knob Nut and Screw | Q | Frog Adjusting Screw |



No. A78 DUPLEX RABBET & FILLISTER PLANES

- | | | | |
|---|-------------------------|---|---------------------------------|
| A | Body | H | Knurled Fence Screw |
| B | Lever Cap | J | Depth Gauge |
| C | Lever Cap Knurled Screw | K | Depth Gauge Thumbscrew & washer |
| D | Cutter | L | Spur and Screw |
| E | Lever Cap Screw | M | Cutter Adjusting Nut |
| F | Fence | N | Cutter Adjusting Screw |
| G | Fence Arms | O | Body Arm Setscrew |



No. A77 BULL NOSE RABBET PLANES

- | | | | |
|---|------------------------|---|-----------------------|
| A | Body | H | Nose Locking Screw |
| B | Lever Cap | J | Mouth Distance Pieces |
| C | Cutting Iron | | |
| D | Lever Cap Screw | | |
| E | Cutter Adjusting Screw | | |
| F | Cutter Adjusting Nut | | |
| G | Detachable Nose | | |

ANANT HAND SAW



DESCRIPTION

ANANT Professional and Universal Handsaw is most suitable for all types of wood and related material for Smoother finish and Faster Cut.

MATERIALS

High Quality Steel.

PACKING

Packed 6 pcs. in one box and 8 boxes in one Cartoon.



ANANT Handsaw Professional (Crosscut)

with Rubber Grip ABS Soft Handle Ready to Use

SIZE
16" (410mm)
18" (450mm)
22" (560mm)

ANANT Handsaw Universal (Push Type)

Yellow PP & Black PVC Handle Ready to Use

SIZE
16" (410mm)
18" (450mm)
22" (560mm)

ANANT Handsaw Universal (Pull Type)

Yellow PP & Black PVC Handle Ready to Use

SIZE
16" (410mm)
18" (450mm)
22" (560mm)

ANANT COMBINATION & SHARPENING STONE

DESCRIPTION

ANANT Silicon Carbide Combination Stone is used for Sharpening Chisels, Plane Iron, Knives, and Blades etc. High Quality of Silicon Carbide Stone are best suitable for Sharp and Fast Cutting.

MATERIALS

High Quality Silicon Carbide.

PACKING

Packed individual in a box and 50 pcs. in one Cartoon.

ANANT Silicon Carbide Sharpening Stone

Grit C120 / C240

SIZE
6" x 2.5" x 1"
8" x 2" x 1"



T-BAR CLAMP



DESCRIPTION

BARSECTION

Final Machine Scale No. A136, 1 3/4", 3/4" (45mm x 19mm).

The bars of these clamps are made of special T-Bar section steel & will not bend in use. The T edges on which the slides operates are dimensionally accurate ensuring an easy sliding movement. Head and slides are robustly designed to match the strength of the bar. The ANANT improved working slide, which incorporates large thrust surfaces ensure long wear and a reliable coupling between slides and screw.



MATERIALS

Bar : Cold Rolled Steel T-Bar Section
 Head & Slides : S. G. Iron
 Screw & Handle : High Quality Steel

FINISH

Enamelled ANANT Blue.

Spare parts are readily available.

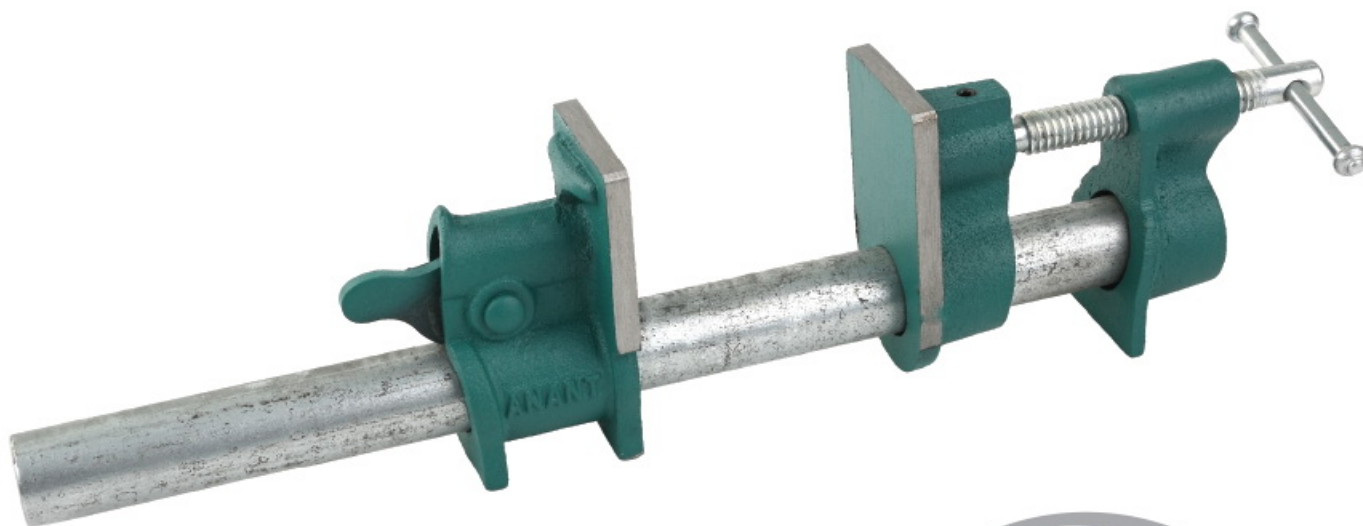
CLAMP NO. A 136

LENGTH OF BAR		WIDTH OF CUT IRON		APPROX. WEIGHT	
inches	mm	inches	mm	Pounds	Kg
24	610	15	381	8½	3.75
30	762	21	534	9 1/8	4.14
36	950	27	686	10	4.54
42	1068	33	839	10 7/8	4.94
48	1220	39	991	11¼	5.53
54	1372	45	1143	12 5/8	5.73
60	1524	51	1296	13½	6.13
66	1678	57	1448	14 3/8	6.52
72	1830	63	1601	15¼	6.92

LENGTHENING BARS FOR NO. A 136 TO SUIT ABOVE CLAMPS

LENGTH OF BAR		APPROX. WEIGHT	
inches	mm	Pounds	Kg
24	610	4½	2.11
30	762	5½	2.51
36	950	6½	2.91
42	1068	7¼	3.30
48	1220	8 1/8	3.70
54	1372	9	4.10
60	1524	10	4.49

PIPE/GLUING CLAMP



DESCRIPTION

1/2" Heavy duty wood Gluing Pipe Clamp with quick release carpenter hand tool. Easy to operate clamping force, sturdy and durable structure is simple, spring lever controls locks jaw at any needed location and provides quick release.

DEPTH OF CAPTURE : 40 MM

MATERIALS : Trapezoidal thread on stop screw

FITTING ON SIZE : 1/2"

COLOUR : ANANT Green

PACKING : Individually cartoned at 30 Pcs./ct.

SIZE : AT-12

DESCRIPTION

3/4" Heavy duty wood Gluing Pipe Clamp with quick release carpenter hand tool. Easy to operate clamping force, sturdy and durable structure is simple, spring lever controls locks jaw at any needed location and provides quick release.

DEPTH OF CAPTURE : 55 MM

MATERIALS : Trapezoidal thread on stop screw

FITTING ON SIZE : 3/4"

COLOUR : ANANT Green

PACKING : Individually cartoned at 16 Pcs./ct.

SIZE : AT-34

STEEL SASH CLAMP



DESCRIPTION

BAR SECTION

Final Machine Scale : Left No. A135, 1 1/4", 1/4" (32mm x 7mm).

The clamps are fitted with the ANANT improved working slide, the principle feature of which is the incorporation of large thrust surfaces ensuring long wear & providing a reliable coupling between slide & screw. Each clamp is fitted with a bar stop to prevent accidental loss of tail slide.

MATERIALS

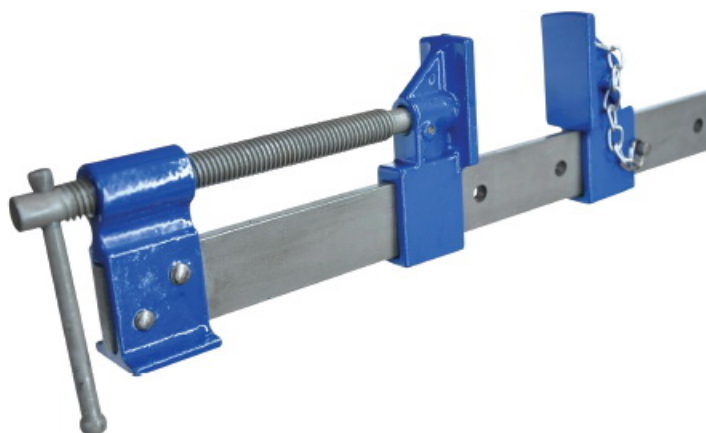
Bar : Bright Steel with square edges.

Head & Slides : S. G. Iron

Screw & Handle : High Quality Steel

FINISH

Enamelled ANANT Blue.



Spare parts are readily available.

CLAMP NO. A 135

LENGTH OF BAR		WIDTH OF CUT IRON		APPROX. WEIGHT	
inches	mm	inches	mm	Pounds	Kg
24	610	18	450	4½	2.15
30	762	24	610	5	2.30
36	950	30	762	5½	2.50
42	1068	36	915	6	2.75
48	1220	42	1068	6½	3.00

LENGTHENING BARS FOR NO. A 136 TO SUIT ABOVE CLAMPS

LENGTH OF BAR		APPROX. WEIGHT	
inches	mm	Pounds	Kg
24	610	3	1.50
30	762	3½	1.75
36	950	4	2.00
42	1068	4½	2.15
48	1220	5	2.30

CLAMP HEAD AM130

DESCRIPTION

With a pair of ANANT Clamp heads, a bar clamp of any length can easily be made using a piece of timber 1 inch (26mm) thick.

Fitted with an improved working slide.

PLANE NO.	PARTICULARS
AM130	Clamp Head

MATERIALS

Head and slides : Best quality cast iron.
Handle and screw : High quality steel.

FINISH

Stove Enamelled ANANT Blue.

PACKING

Individually packed in carton box.



G CRAMPS NO. 121



FOR HEAVY DUTY

DESCRIPTION

Designed for heavy duty these cramps are robust in construction and rigid in use. The screw has a unified from thread and all sizes are fitted with a drop handle and swivel shoe which adapts itself to any angle of grip.

MATERIALS

FRAME : Drop-forged steel, heat treated to close limits.

SCREW : High quality steel, accurately machined.

COLOUR

ANANT Blue



TO TAKE IN		DEPTH OF THROAT (from centre of screw)		DIAMETER OF SCREW		APPROX. WEIGHT	
inches	mm	inches	mm	inches	mm	Pounds	Kg
2	51	1 3/4	45	7/16	11	1 1/4	.57
3	77	2 1/8	54	1/2	14	1 3/4	.79
4	102	2 3/4	70	5/8	16	2 1/2	1.13
6	153	3 5/8	92	3/4	19	5	2.27
8	204	3 5/8	92	3/4	19	7	3.18
10	254	4	102	3/4	19	9 1/2	4.31
12	305	4 1/2	115	7/8	23	13	5.89

Spare Parts are readily available

STEEL BODIED F-CLAMP

DESCRIPTION

We are manufacturing a wide range of F-Clamp which is customized as per the specifications of our clients. These are special clamping equipment and are demanded as industrial 'step over' clamps. These are compliance with various industrial standards and possess following specifications:

WORKABLE LENGTH	150	150	200	200	250	250	300	300	400	400	400
FLAT SIZE	20	25	20	25	20	25	20	25	25	30	35
THICKNESS	6	6	6	6	6	6	6	6	6	6	7

WORKABLE LENGTH	500	500	600	600	700	800	800	900	1000	1200	1500	2000	2500	3000
FLAT SIZE	30	35	30	35	35	35	40	35	40	40	40	40	40	40
THICKNESS	6	6	7	7	7	7	7	7	7	7	7	7	7	7

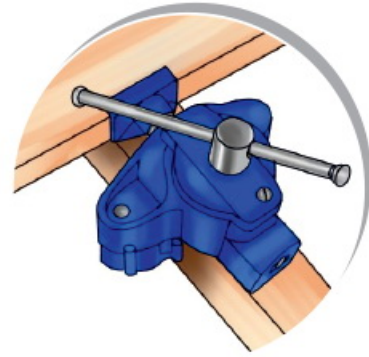


FLOORING CLAMP ATMFC 153



DESCRIPTION

ANANT Cramp, Though compact, light and easily portable, is extremely robust. The bevel gears ensure smoothness of operation and are totally enclosed thus being protected against damage and dirt. Spring loaded cams provide a rapid action and positive grip. Between operations the cramp may be quickly released from the joist.



MATERIALS

Body : SG Iron of Guaranteed Quality

Shoe & Cams : Malleable Iron

Handle, Screw & Bevel Gears : High Quality Steel

Fitted with an improved working slide

FINISH

Inamelled **ANANT** Blue.



ITEM CODE	PARTICULARS
-----------	-------------

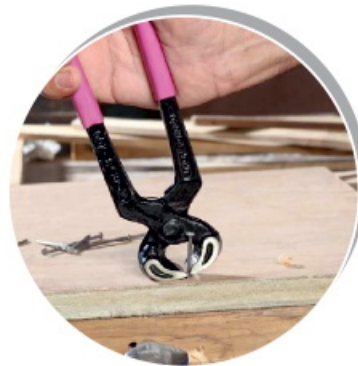
AM153	Flooring Clamp
-------	----------------

Spare Parts are readily available

ANANT CARPENTER Pincer

DESCRIPTION

Made by India's leading manufacturer of pliers, cutters for industry and professional craftsmen, our Carpenter's Pincers are forged using special tool steel and oil hardened. The plastic-coated, straight handles are offset from the pivot joint, which compounds the gripping force. Traditional tools used primarily for extracting fasteners, Carpenter's Pincers are designed to grasp, cut and pull an object with significant mechanical force. The smooth, polished face of the "bullnose" head curves to a cutting edge that has been ground with minimal bevel. This design allows the very top of a nail to be grasped virtually flush with the surface, and effortlessly extracted with a very high degree of leverage. Even embedded or deformed nails are removed easily. With a hardened striking face, it is superbly suited for most construction, concrete, roofing, fencing and fabrication work.



BRICK TROWEL



DESCRIPTION

Wide Pattern trowel are designed for laying bricks for block, Rounded heel shape the blade so that the mortar is carried a little further forward on the blade & wider heel allows for even more mortar to be scooped on the blade. The impact area is made stronger to provide extra endurance, The handle rise is set for correct hang & balance. The blade is hardened & tempered to ensure durability. Wooden handle is attached for comfortable grip.

MATERIALS

Blade : High Carbon Spring Steel
 : Handle is made from selected hard wood & is also available in plastic.

FINISHING

Blade is polished from bottom & powder coated from top
 The handle is lacquer polished



BRICK TROWEL NO.	BLADE		APPROX WEIGHT IN GRAMS
	Length	Width	
A-501	4½"	1-7/8"	150
A-502	8"	5½"	355
A-503	11"	5½"	455

PLASTERING TROWEL

DESCRIPTION

Plastic Trowel is so designed for guarantee to stay flat use after use & can withstand pressure of hard trowling. The flat blade makes applications easier for a more consistent finish. The blade is properly shaped & tempered. The special hard wood handle is fitted for a comfortable grip.

MATERIALS

Blade : High Carbon Spring Steel
 : Handle is made from selected hard wood & is also available in plastic.

FINISHING

Blade is polished from bottom & powder coated from top
 The handle is lacquer polished

PACKING

Two pieces in a box.



BRICK TROWEL NO.	BLADE		APPROX WEIGHT IN GRAMS
	Length	Width	
A-451	13"	5"	500

ROTARY HAMMER A220



DESCRIPTION

Bore	20mm
Power	500w
Max. Speed	850rpm
Volt	220v

ITEM NO.
A 220



ANANT ELECTRIC PLANER A082

DESCRIPTION

Width of Cutter	82mm
Cutting Depth	1mm
Frequency	50/60Hz
Input Power	710W
RPM	15000/Min.
Voltage	220v

ITEM NO.
A082



ANANT DRILL MACHINE (13MM)

DESCRIPTION

Bore	13mm
Power	-----w
Max. Speed	-----rpm
Volt	220v

ITEM NO.
A1303



ANANT MARBLE CUTTER



DESCRIPTION

ANANT Marble Cutter can be used for cutting Marble, Tile, Wood etc. It has a power full motor of 1300w with blade size of 110MM. Comes with manufacturer warranty of 6 months, a Free Pair of Carbon Brush for a long tool life.

Soft Grip Handle to provide fatigue free working and Heavy motor to give you a long tool life.

ITEM NO.

A 110B & A 1104



ANANT ANGLE GRINDER

DESCRIPTION

The small angle grinders are powerful, handy tools from ANANT for working on metal.

- This ANANT angle grinder is an incredible all-round angle grinder.
- It is safe and easy to use helping you complete your job quickly and effortlessly.
- It has a small gear head for easy working giving you your money's worth.

ITEM NO.

A 110 & A 801



ANANT REINFORCED CUT OFF WHEEL

107 x 1.2 x 16mm

DESCRIPTION

Super thin Cut off wheel

Max 15330 RPM

Max 80 M/S

For Cutting Inox, Metals, Sainless Steel

SIZE

107 x 1.2 x 16mm



SAW BLADE



ANANT ROCKSTAR DIAMOND SAW BLADE SEGMENTED

DESCRIPTION

ANANT Rockstar diamond saw blade is suitable for faster cutting & Longer Life for cutting of Marble, Granite, Bricks & Tiles on Dry surface.

Width of Cutter	110mm (Segmented)
Bore	20mm
Max. Speed	15000 RPM 80 M/S
Diameter42	4 ½"



ANANT ROCKSTAR DIAMOND SAW BLADE CONTINUOUS RIM WET/DRY

DESCRIPTION

ANANT Rockstar diamond saw blade is suitable for faster cutting & Longer Life for cutting of Clean & Chip Free Moulding

Width of Cutter	110mm (Continuous Rim wet/dry)
Bore	20mm
Max. Speed	15000 RPM 80 M/S
Diameter42	4 ½"



ANANT WOODCRAFT TCT CIRCULAR SAW BLADE

DESCRIPTION

ANANT Woodcraft TCT Circular Saw Blade is suitable for cutting Wood, Plywood, Laminates, Chipboard Three times more faster

Width of Cutter	110mm
Bore	20mm
Max. Speed	14000 RPM
Diameter 42	4½" & 5"
Teeth	40



ANANT WOODCRAFT TCT CIRCULAR SAW BLADE

DESCRIPTION

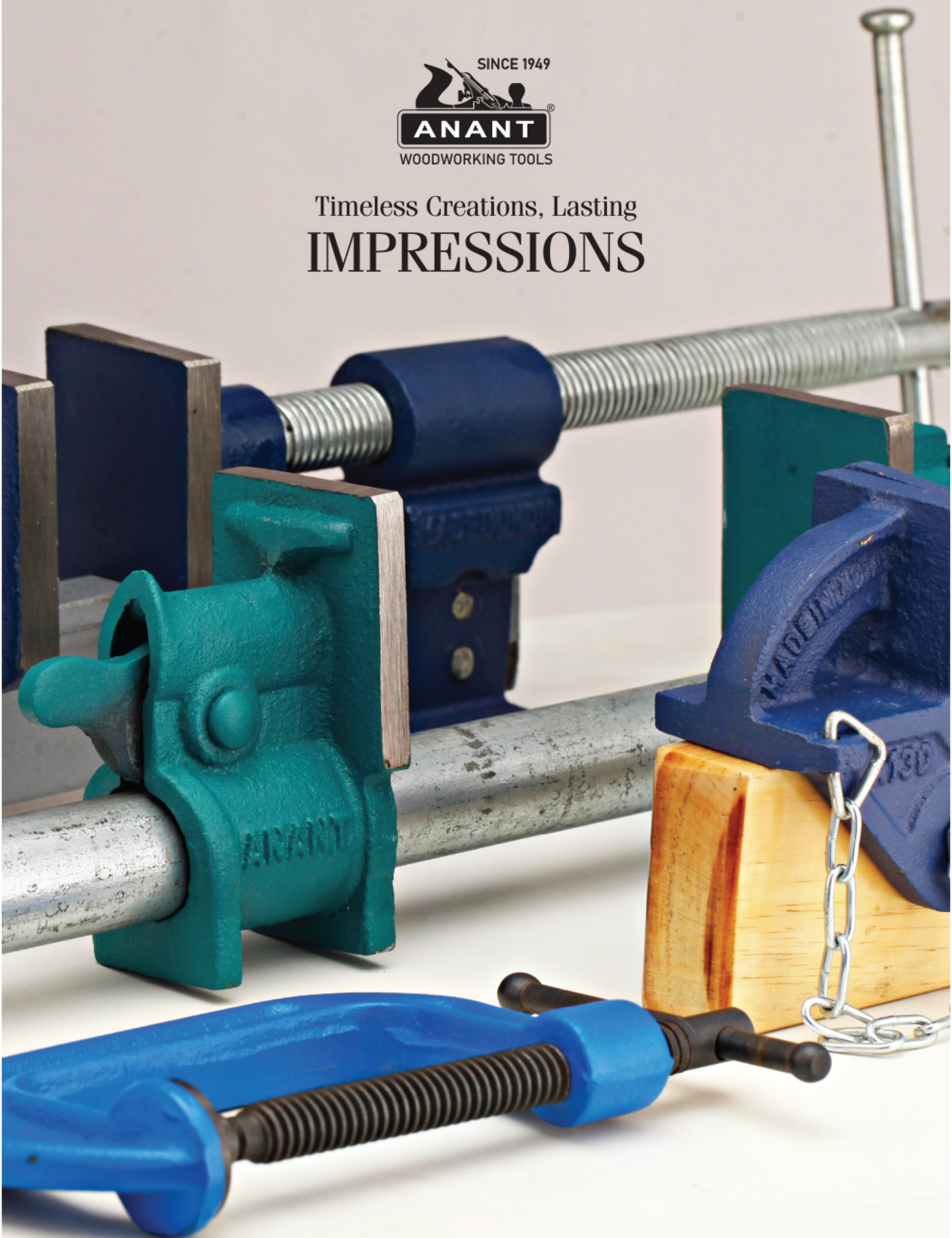
ANANT Razor TCT Circular Saw Blade is suitable for cutting Wood, Plywood, Laminates, Chipboard. Three times more faster. The Green Electroplating absorbs the heat and is Rust proof

Width of Cutter	110mm
Bore	20mm
Max. Speed	14000 RPM
Diameter 42	4½" & 5"
Teeth	40





Timeless Creations, Lasting
IMPRESSIONS





TERMS & CONDITIONS:

1. Order will be subject to our confirmation
2. Prices are ex-godown and subject to change without notice.
3. Goods & Service Tax extra.
4. Each tool is packed and dispatched after minute checking and as such is guaranteed.
5. 25% advance by demand draft with confirmed order and for balance payment, documents will be negotiated through nationalised bank only.
6. All payments even advance should be made direct to the company through M/O or payee's account cheques, company will not be responsible for any payment made to the agent.
7. In case of dispute, jurisdiction Jalandhar courts.

GUARANTEE : All ANANT products are manufactured under the strict supervision of qualified and experienced technicians. As such they are guaranteed for performance and any other manufacturing defects

REPLACEMENTS : Any part claimed to be defective must be returned to us with transportation charges prepaid. The part will be replaced free of charge and the transportation charges refunded, if an examination the part is found defective in material or workmanship. In case no defect is found in the part, the same will be returned to the senders at their cost. Except this, there is no other guarantee for our products and no selling agents or representative of the company is authorised to make any change in our above guarantee and the term of replacement



ANANT TOOLS PVT. LTD.

POST BOX. NO. 467

Regd. Office: A-1 Focal Point, Jalandhar-144 004 (INDIA)

Ph.: +91-181-5020570, 5020576